

Species Encountered at the Cat and Thomas Mountains Preserve

Birds

American Robin
 Black-capped Chickadee
 Blue Jay
 Broad-winged Hawk
 Downy Woodpecker
 Great-horned Owl
 Ruffed Grouse
 Screech Owl
 Sharp-shinned Hawk
 White-throated Sparrow
 Wild Turkey
 Wood Thrush

Insects

Monarch Butterfly
 Mourning Cloak
 Spring Azure
 Tiger Swallowtail

Mammals

Bobcat
 Black Bear
 Coyote
 Eastern Chipmunk
 Fisher
 Gray Fox
 Gray Squirrel
 Moose
 Porcupine
 Raccoon
 Red Squirrel
 White-tailed Deer

Plants

American Beech
 American Hemlock
 Black Birch
 Common Milkweed
 Christmas Fern
 Eastern Hophornbeam
 Foamflower
 Fringed Polygala
 Interrupted Fern
 Jack-in-the-Pulpit
 Jewelweed
 Pink Ladyslipper
 Red Maple
 Red Mulberry
 Red Oak
 Shagbark Hickory
 Striped Maple
 White-Birch

Reptiles/Amphibians

American Toad
 Eastern Garter Snake
 Fowler's Toad
 Red Eft
 Red Spotted Newt
 Wood Frog

Preserve Use Guidelines

- Please hike only on the marked trails shown on the enclosed map.
- Please be courteous of other guests at the preserve.
- No unauthorized removal of plants or animals.
- No camping, fires, motorized or non-motorized recreational vehicles of any kind allowed on the preserve.
- Please keep dogs leashed.
- Please park only in the provided lot. If all spaces are full, please come back another time.
- Do not park along the roadway or on any neighboring property.
- Please do not litter. Help keep the preserve clean for all to enjoy.

For information on membership, volunteer opportunities, land protection, and preserving Lake George's unique natural heritage, please contact:

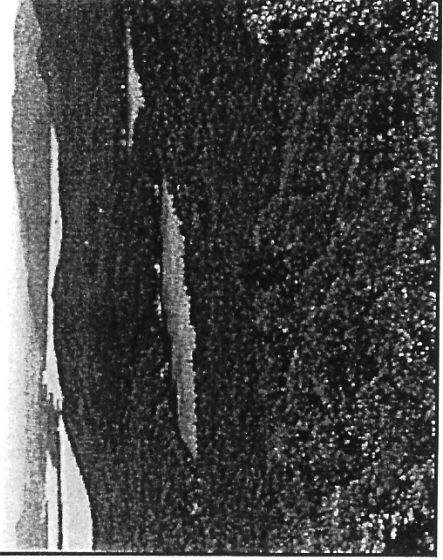


4905 Lake Shore Drive, P.O. Box 1250
 Bolton Landing, NY 12814
 (518) 644-9673
www.lglc.org

Directions to preserve trailhead:
 From the Northway (I-87): From Exit 24, head east on County Route 11 for approximately 2 miles. Turn right onto Valley Woods Road. The preserve is about 1/10-mile on the right.



Cat and Thomas Mountains P R E S E R V E



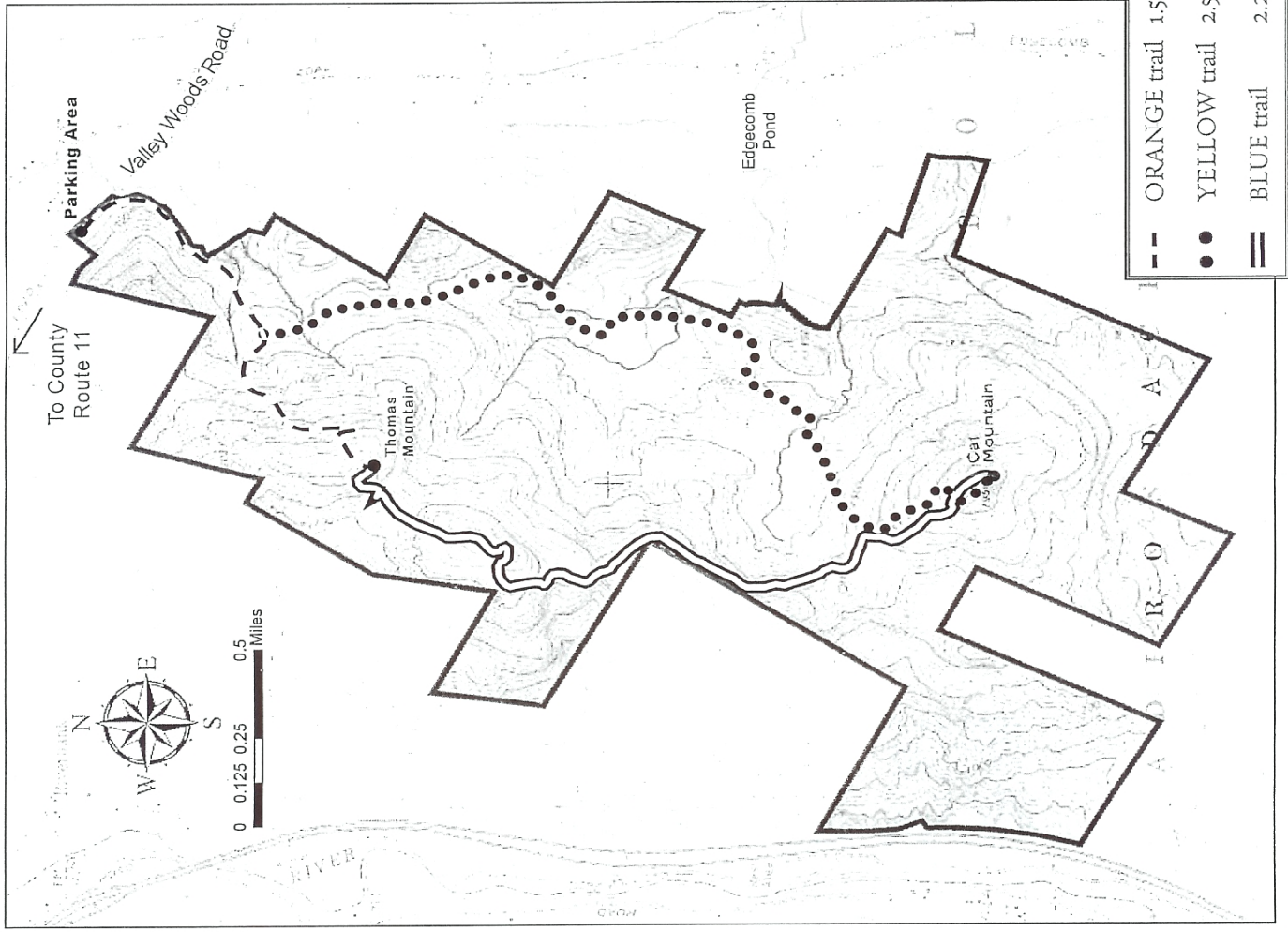
A Brief Background of Cat and Thomas Mountains

Just a five-minute drive from Bolton Landing, the trails to the summits of Cat and Thomas Mountains reward hikers with outstanding views of Lake George's south and central basins and the southern Adirondacks.

The orange trail to Thomas Mountain follows a logging road as it winds up the mountain through varying forest types and ends at a quaint cabin that takes in the region's scenic beauty. The yellow trail to Cat Mountain also follows a logging road, past a number of wetlands and beaver ponds, ultimately taking in a 270° view of Lake George and the Adirondacks. The preserve's newest trail, the blue trail, leads hikers through more wooded and rugged terrain across the ridgeline from the summit of Thomas to the summit of Cat.

This 1850-acre parcel was acquired by the Lake George Land Conservancy in 2003. Its preservation is a major accomplishment in protecting the Lake George watershed, as one of the lake's larger tributaries, Finkle Brook, flows through the preserve and forms Edgecomb Pond, the drinking water source for Bolton Landing.

In addition to preserving Edgecomb Pond, the Cat and Thomas Mountains Preserve protects the largest tract of contiguous land remaining in Bolton, yet another step in safeguarding the majestic watershed of Lake George. Enjoy your visit and please come again!



Since 1988, the Lake George Land Conservancy has been working to preserve the world-renowned water quality of Lake George and the rare plants and animals within its 150,000-acre watershed.